

**MAGNETI  
MARELLI**

# VISION PRO

Electronic Vehicle  
Diagnostic Tester



- ▶ VISION PRO Tester
- ▶ Visionstar





# VISION PRO Tester

007935800020



## The set contains:

- ▶ 1 VISION PRO Tester
- ▶ 1 EOBD cable
- ▶ 1 EOBD cable extender
- ▶ 1 cigarette lighter socket power cord
- ▶ 1 AC adapter
- ▶ 1 SD card reader for PC
- ▶ 1 multimeter probe, black
- ▶ 1 multimeter probe, red
- ▶ A set of cables for the oscilloscope
- ▶ 1 Bluetooth module for PC
- ▶ Protective pouch
- ▶ Installation CD for PC
- ▶ Instruction manual
- ▶ Carrying case

## Specifications:

- ▶ Advanced diagnostics system with special functions: Magneti Marelli Advanced Know-how, OK Function, Easy Diag & Easy Scope
- ▶ Palmtop Touch tester with PC control (compatible systems: Windows 7, Windows 8, and Windows 10)
- ▶ Connection to PC via Bluetooth
- ▶ Integrated 2-channel oscilloscope (100 MS/s)
- ▶ Integrated multimeter: voltage, resistance and conductivity measurements (with buzzer)
- ▶ Dual integrated lithium batteries rechargeable via EOBD socket, AC adapter or cigarette lighter socket
- ▶ 8" touch screen: 1024 x 768 resolution, 1000 cd/m2 display, horizontal or vertical
- ▶ 8 GB RAM Upgradeable via WiFi
- ▶ Multifunctional vehicle search: Manual selection, Automatic search, Search by controller and Search by engine code
- ▶ Depending on the valid licence, diagnostics of: passenger cars, light commercial vehicles, pickups, trucks, trailers, buses and motorcycles
- ▶ Built-in 5-megapixel rear camera
- ▶ Set of cables and accessories for professional oscilloscope operation

**ACCESSORIES**



**Current measuring set**

007935901080

- ▶ 1 20/60 A meter forceps
- ▶ 1 600 A meter forceps
- ▶ 1 adapter for measuring the 308B fuse current
- ▶ 1 adapter for measuring the 307C fuse current
- ▶ 2 wires with battery terminals

**Oscilloscope data**

Channels with mathematical function

Zoom (10,000 points) in real time

Measuring with the cursor

Analysis of RAM data (buffer)

Split boxes

Amplitude scale

Time scale

Trigger

Vertical resolution of the oscilloscope

Multimeter resolution

**VISION PRO Tester**

Reverse CH1, Reverse CH2, CH1+CH2, CH1-CH2, CH1\*CH2, CH1/CH2 and Fourier Transformation

Zoom in, zoom out and personalize

Amplitude, time and frequency values

Constant reception of signals with the possibility to save and retrieve them for comparison and more detailed analysis

10 x 10

100 mV/div to 40 V/div  
(±500 mV, ±200 V)

200 ns/div to 20 s/div

Auto/Single/Normal with cursor

13 bits

16 bits

**ACCESSORIES**



**A set of adapters for the oscilloscope**

007935901090

- ▶ 1 black multimeter probe with clamp
- ▶ 1 red multimeter probe with clamp
- ▶ 1 small red clamping clip
- ▶ 1 small black clamping clip
- ▶ 1 attenuator 20: 1
- ▶ 1 big red clamping clip
- ▶ 1 big black clamping clip
- ▶ 1 bundle of 6 universal breakout cables 1.5 mm
- ▶ 1 bundle of 6 universal breakout cables 2.3 mm

**+ Plus**



The parameters measured on the vehicle can be compared to the reference parameters at two engine speeds: 1,000 and 2,500 rpm

**OK Function**



A set of repetitive and simplified functions for quick performance of several tasks, e.g. deletion, coding, etc. This function is also useful for people who are not experienced in special diagnostics of vehicle control units.

## Easy Diag



A useful workshop manual for complex procedures and coding, with instructions on how to diagnose and replace components.

## Easy Scope



Helpful guide on operating the oscilloscope with the function of pre-selecting the measurement scale and relevant charts related to the testing of electrical components of the vehicle such as sensors, actuators, etc.

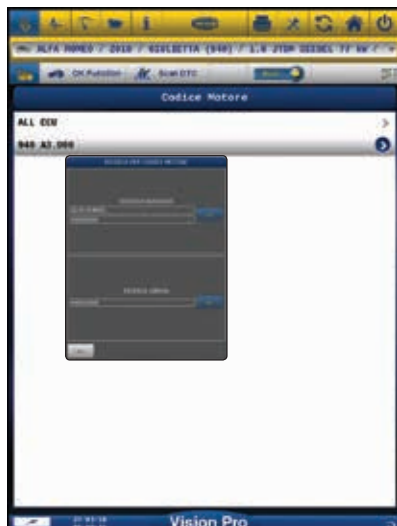
## TPMS coding



Based on the data read by TPMS Connect EVO\*, it is easy to encode the TPMS control unit with new sensors.

*\*TPMS Connect EVO: testing and coding of wireless tyre pressure sensors (code 007935900385)*

## Searching by engine code



The function allows you to quickly and easily select a vehicle. It enables the precise selection of a given vehicle equipped e.g. with a specific type of controllers.

## Searching by controller



The software automatically identifies and recognizes the controller that can be mounted on the vehicle to avoid problems with displaying parameters or errors. The scanning is based on two search criteria: a single brand and similar brands.

## DTC scan



This is a function that activates the search for errors in all control units in the vehicle, displaying any errors that may occur and allowing them to be deleted.



**Visionstar**

007935800180



## Visionstar is a new operating environment combining the features of VISION PRO Tester and METstar platform.

The new application enriches the diagnostic functions of the tester with the ability to navigate in the environment of the Technical Database, and to manage the car service, i.e. with functions fully integrated in one user interface.

Visionstar, in addition to the function of manual search for the vehicle in a wide range of brands, also has advanced search functions, such as:

- ▶ Search by registration number
- ▶ VIN filter (also with direct reading in the control unit)
- ▶ Engine code.

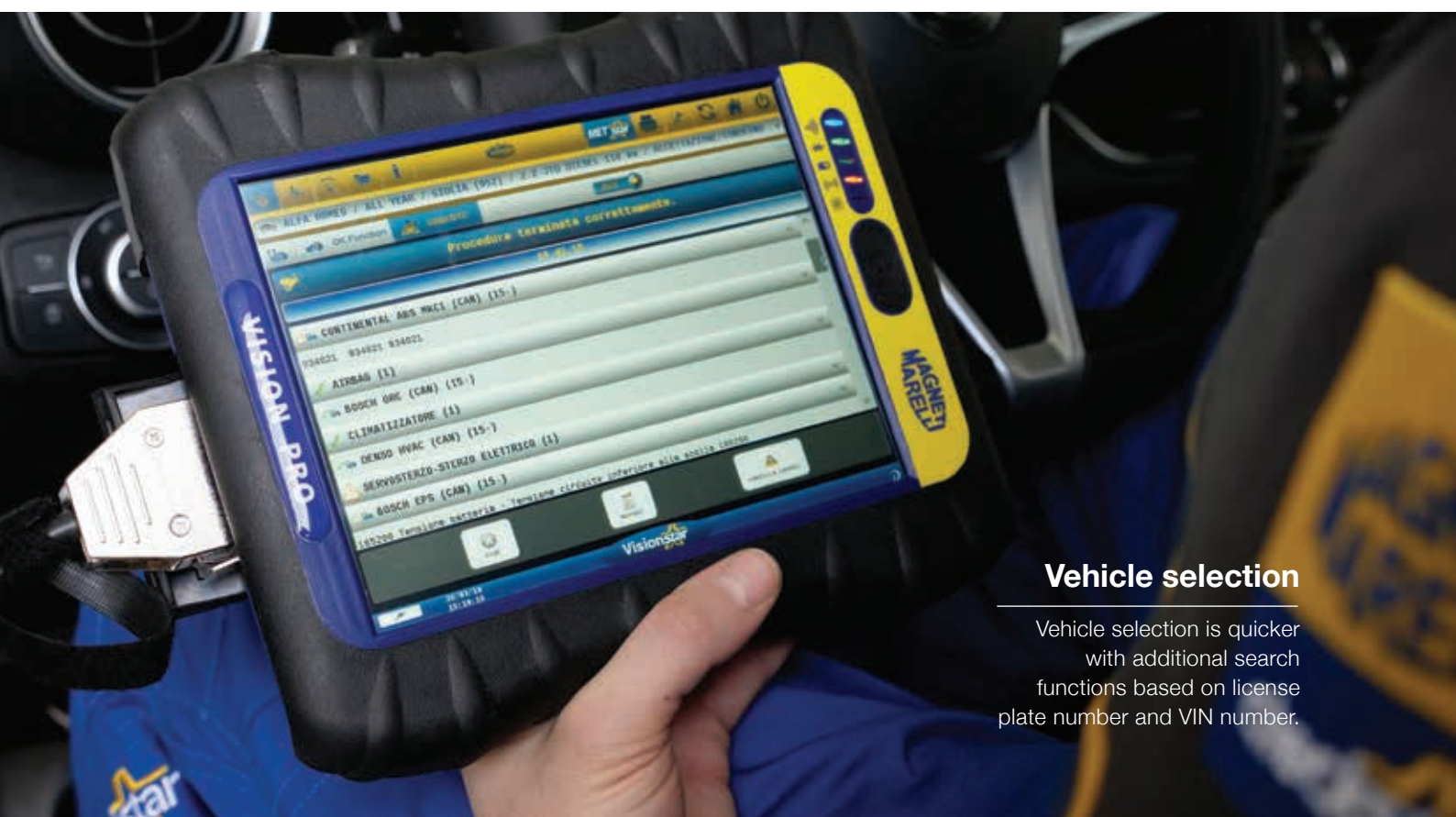
Error analysis allows you to carry out measurements using electrical diagrams, detailed component features, etc. and to take measurements using an oscilloscope and multimeter which the VISION PRO tester is equipped with. The component's fault can be analysed in an efficient and intuitive way.

**Automatic spare part selection via DTC:** This is an innovative feature, patented by Magneti Marelli, which associates and suggests an optimal spare part depending on the error read.

**Graphical navigation for spare parts selection:** Divided into vehicle components to facilitate testing and identification of the component to be replaced. In addition, information about the time needed for the work and the price of the element, according to updated price lists of more than 540 original and aftermarket manufacturers.

**Direct access to Magneti Marelli Campus courses:** With the possibility of taking a course on a particular vehicle.

Visionstar allows you to move from the vehicle selection phase and error reading combined with an analysis of the problem using the full Technical Database, to the display of the spare parts list and drawing up of a cost estimate using market prices and related working time (cost of labour). In addition, it allows you to issue receipts or invoices and send orders to the supplier. Visionstar functions can be displayed directly on the VISION PRO display or on an external PC connected wirelessly (Bluetooth).



## Vehicle selection

Vehicle selection is quicker with additional search functions based on license plate number and VIN number.

## VIN scanning

This function allows you to recognize and select a vehicle and then diagnose it on the basis of the VIN number stored in the engine control unit.



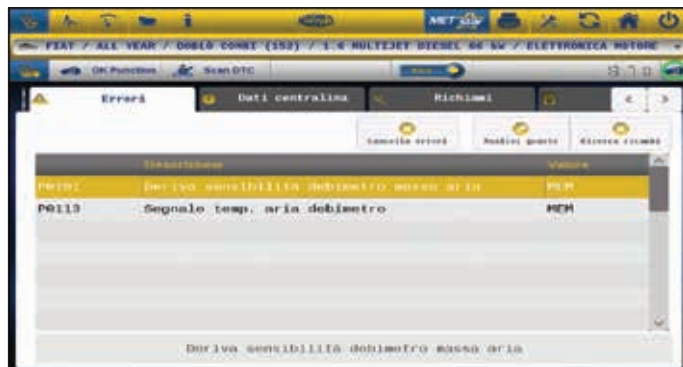
## Integrated database and diagnostics

Once you have selected your vehicle, you can go to a menu where, in addition to diagnostics, you can obtain information on spare parts, services and technical information. In addition, the search by license plate number provides information on when the vehicle should be serviced.



## Vehicle diagnostics

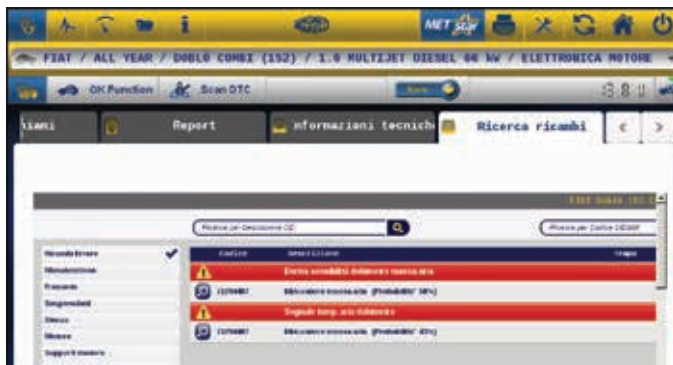
With the Visionstar interface, you can access quickly and intuitively all ECU diagnostic functions, while managing technical information and spare parts searches.



## Fault analysis

Based on the error displayed during the vehicle diagnostics, you can access the technical information of the damaged component from the METstar Database.





## Spare parts search

Based on the error displayed during the vehicle diagnostics, you can access the list of potential spare parts with an indication of when to replace them and the current price.

In addition, the available Magneti Marelli spare parts are shown on the display together with detailed data, i.e. drawings, images and technical specifications.



## Spare parts search with graphical navigation

The selection of spare parts is even more intuitive thanks to detailed graphic tables.



## Cost estimates / Invoices /Receipts

With just a few clicks you can convert cost estimates into invoices or fiscal receipts.



## Ordering spare parts

This function allows you to send your order directly to the spare parts supplier, giving full workshop data, including details of the vehicle being repaired and the parts being replaced.





---

**MAGNETI MARELLI AFTERMARKET SP. Z O.O.**  
Plac pod Lipami 5, 40-476 Katowice, Poland - Tel. +48 32 60 36 107 - Fax +48 32 60 36 108  
[www.magnetimarelli-checkstar.pl](http://www.magnetimarelli-checkstar.pl)